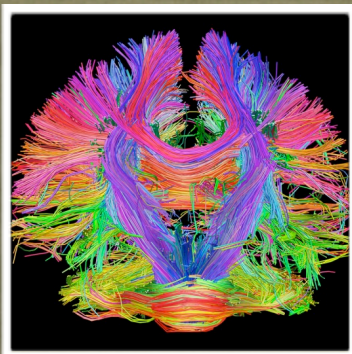




THE UNIVERSITY OF
MELBOURNE

Brain Development & The Pathophysiology Of Psychosis



PhD in Developmental Psychiatry

We are seeking an enthusiastic and academically high-performing student to be involved in a PhD project investigating brain developmental changes associated with the emergence and pathophysiology of psychotic disorders.

Psychosis is a severe mental illness that typically emerges in adolescence and young adulthood. It is increasingly recognised that disturbances in normal brain developmental processes contribute to the pathophysiology of psychosis. The aim of this project is to further investigate potential mechanisms (e.g. immunological, genetic) and modifiers (e.g. environmental) of brain changes that occur over adolescence and how these may be related to the manifestation of psychotic disorders.

The successful candidate will have the opportunity to craft a thesis topic aligned to their interests utilising data collected from previous longitudinal or cross-sectional studies. This data may include structural and functional imaging, peripheral immune markers, genetic, environmental and behavioural data.

The successful applicant should have an undergraduate and honours degree in a relevant field (psychology, psychophysiology and/or neuroscience) with excellent results. Prospective PhD and combined PhD/Masters students are encouraged to apply.

For further information contact Dr Vanessa Cropley;
vcropley@unimelb.edu.au

